



# Portable, Fast, Molecular Detection Platform



- Self – contained. Battery powered devices for mobile qPCR applications
- Best solution for accurate and cost effective pathogen detection at geographic locations around the world
- Platform has been deployed for detection of emerging diseases – Ebola and Zika Virus
- No sample preparation required

*For Research Use Only*

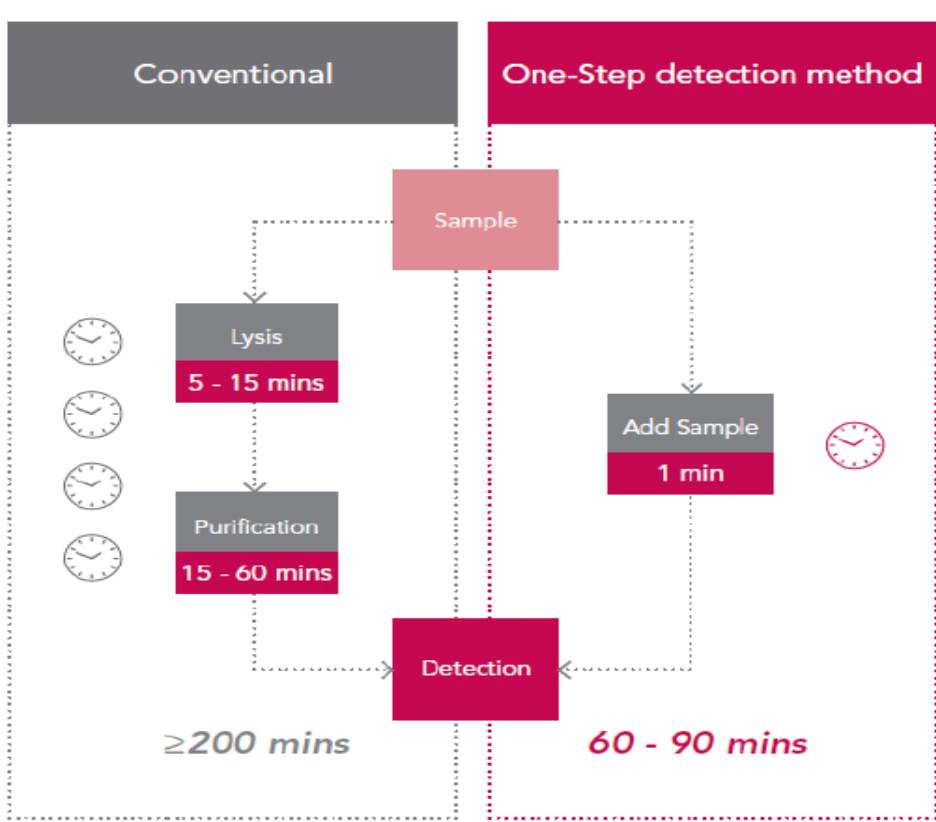
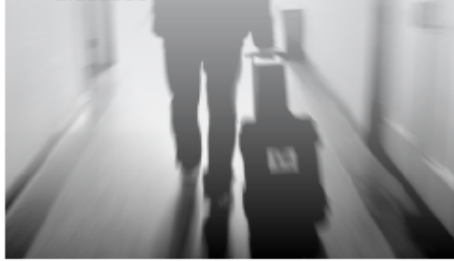
Molecular Diagnostics For Everyone

Labguide Co., Ltd. (Taiwan)  
E-mail : [terry@seed.net.tw](mailto:terry@seed.net.tw)  
Tel. : +886-2-29406162  
Add. : 3F., No.37, Ln. 232, Huaxin St., Zhonghe Dist.,  
New Taipei City 235, Taiwan (R.O.C.)  
<http://www.labguide.com.tw>

Labguide Co., Ltd. (Shenzhen)  
E-mail : [admin@labguide.com.cn](mailto:admin@labguide.com.cn)  
Tel. : +86-075527750787  
Add. : Address: C603, Baohe Building, No.98 of Baonong  
North Alley, Bao'an District, Shenzhen, China.  
<http://www.labguide.com.cn>

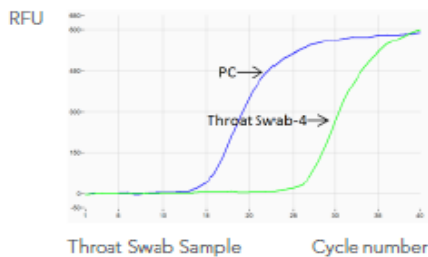
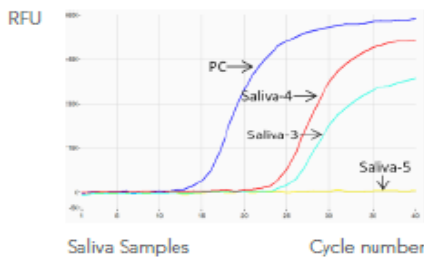
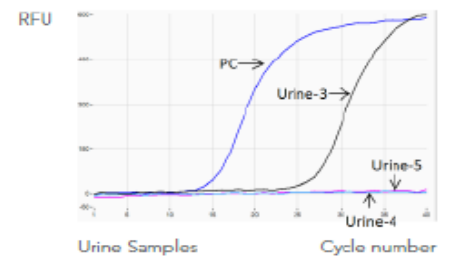
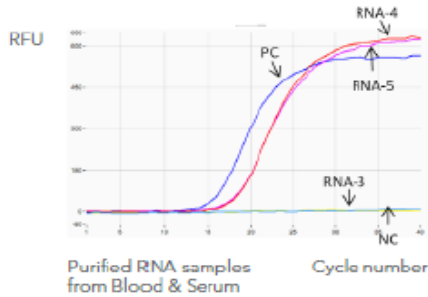
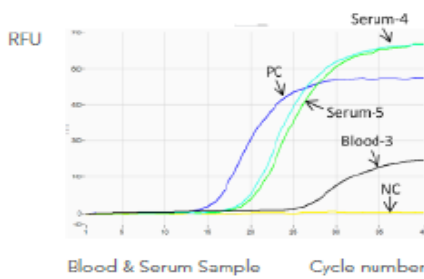
## Features

- One-Step qPCR reagents eliminate nucleic acid extraction and purification steps
- Sample added directly into tube containing One-Step reagents and placed in Coyote qPCR device
- Nucleic acid extraction, purification and detection performed in a single tube
- Time to result 1 - 1.5 hours
- Detects virus in whole blood, serum, urine, or saliva samples
- Quick reaction to the emerging diseases



## Zika outbreak confirmed by COYOTE in China

\* PC - positive control NC - negative control



### Coyote Bioscience Co., Ltd.

2th Floor, Shangdixinxilu#12 Haidian District, Beijing, China  
Phone: +8610 64844237  
[www.coyotebio.com/en](http://www.coyotebio.com/en)

### Coyote Bioscience USA Inc.

1506 Dell Avenue, Suite A, Campbell, CA 95008  
Phone: +1 650-528-2199  
[www.coyotebio-usa.com](http://www.coyotebio-usa.com)

### Labguide Co., Ltd. (Taiwan)

E-mail: [terry@seed.net.tw](mailto:terry@seed.net.tw)  
Tel.: +886-2-29406162  
Add.: 3F., No.37, Ln. 232, Huaxin St., Zhonghe Dist.,  
New Taipei City 235, Taiwan (R.O.C.)  
<http://www.labguide.com.tw>

### Labguide Co., Ltd. (Shenzhen)

E-mail: [admin@labguide.com.cn](mailto:admin@labguide.com.cn)  
Tel.: +86-075527750787  
Add.: Address: C603, Baohe Building, No.98 of Baonong  
North Alley, Bao'an District, Shenzhen, China.  
<http://www.labguide.com.cn>